

PARIO Tray Lift

Enables a higher degree of autonomy through AIV connection

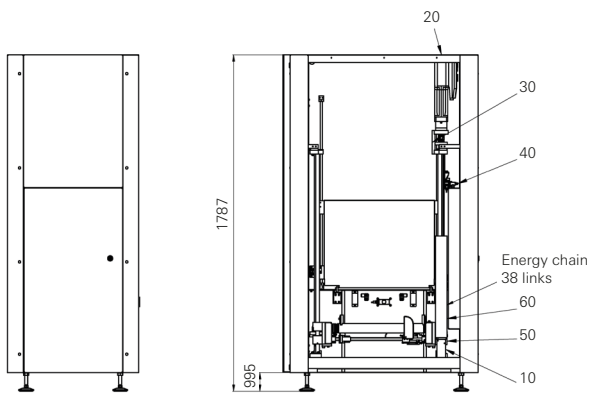


Description

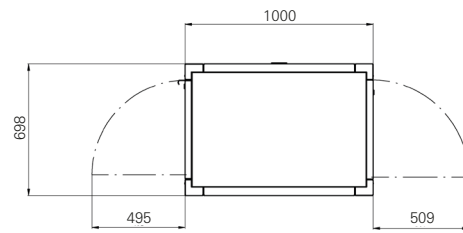
The PARIO Tray Lift is used to transport trays into an automated production line. The lift can be connected to the PARIO 500, 800 or 1000. In addition, the system allows a higher degree of autonomy through an AIV connection.

- _ Lift for PARIO 500 / 800 / 1000
- _ For Trays up to 400 x 600 mm
- _ Fully automated loading/unloading via AIV or trolley, manual loading is no longer necessary
- _ Motorized (automatic) width adjustment
- _ Connection to fully automated production possible
- _ Subsequent extension possible

**Enables
Autonomous
Material
Flow**



Top view:



PARIO Tray Lift

Machine Configuration

Conveying height AIV	550 mm ± 50 mm
Conveying height machine	910 mm ± 50 mm

Tray format

Min. tray sizes	200 x 200 mm
Max. tray sizes	400 x 600 mm
Track width	200 - 400 mm
Tray stacking height	400 mm
Max. tray stack weight	40 kg

Installation requirements

Power supply	230 V / 50 Hz
Power supply system	L / N / PE
Power consumption	< 1 kW

Maschinenbeschreibung

Length x Width x Height	698 x 1000 x 1787 mm
Weight	ca. 337 kg

**ASYS
GROUP**

力丰电子|北京市西城区阜成门外大街2号万通新世界广场A1903室。

北京: 010 - 6857 8968

上海: 021 - 5046 1011

深圳: 0755 - 8832 1879

Printed in Germany.

The pictures may contain optional extras, custom fittings or accessories which are not included in the standard scope of delivery. These are available at extra cost.